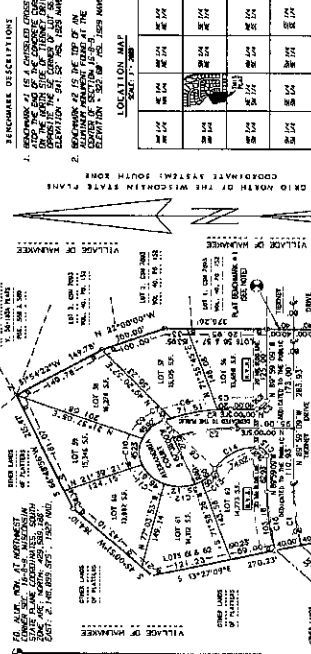


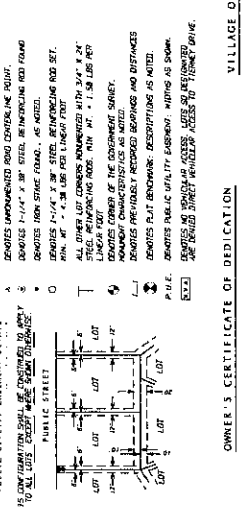
PIEDMONT ADDITION TO SOUTHBRIDGE

BEING LOCATED IN THE SOUTHWEST ONE QUARTER OF THE NORTHWEST ONE QUARTER OF SECTION 16, TOWNSHIP 8 NORTH, RANGE 9 EAST, IN THE VILLAGE OF WAUNAKEE, DANE COUNTY WISCONSIN

ROBERT A. RICHARDSON, PROFESSIONAL LAND SURVEYOR, S-1883



CURVE	BIRTH DATE	NAME	ARC	BEARING	CHORD BEARING	TAN BEARING
C 1	127°42'31"	480.00'	42.25'	53.85°	S 87°16'31" W	N 82°32'09" W
C 2	127°42'31"	227.47'	18.85'	45.00°	N 11°15'34.5" W	N 22°22'09" W
C 3	50°00'00"	15.00'	33.56'	5.00°	S 84°50'00" W	N 84°50'00" W
C 4	50°00'00"	300.47'	10.31'	25.00°	N 82°11'10" W	N 82°22'09" W
C 5	65°46'48"	260.47'	36.19'	71.37°	N 17°16'28.5" W	N 82°22'09" W
C 6	65°46'48"	60.00'	118.10'	118.10°	S 41°24'25" E	S 41°24'25" E
C 7	45°00'00"	60.00'	42.12'	24.85°	N 48°48'00" W	N 48°48'00" W
C 8	45°00'00"	60.00'	42.12'	24.85°	N 48°48'00" W	N 48°48'00" W
C 9	45°00'00"	60.00'	42.12'	24.85°	N 48°48'00" W	N 48°48'00" W
C 10	45°00'00"	60.00'	42.12'	24.85°	N 48°48'00" W	N 48°48'00" W
C 11	45°00'00"	60.00'	42.12'	24.85°	N 48°48'00" W	N 48°48'00" W
C 12	54°42'20"	60.00'	57.27'	31.07°	S 59°52'42" E	S 59°52'42" E
C 13	54°42'20"	60.00'	57.27'	31.07°	S 59°52'42" E	S 59°52'42" E
C 14	54°42'20"	60.00'	57.27'	31.07°	S 59°52'42" E	S 59°52'42" E
C 15	54°42'20"	60.00'	57.27'	31.07°	S 59°52'42" E	S 59°52'42" E
C 16	54°42'20"	60.00'	57.27'	31.07°	S 59°52'42" E	S 59°52'42" E
C 17	54°42'20"	60.00'	57.27'	31.07°	S 59°52'42" E	S 59°52'42" E
C 18	67°22'31"	300.00'	84.51'	42.55°	N 82°18'51" E	N 82°18'51" E
C 19	67°22'31"	300.00'	84.51'	42.55°	N 82°18'51" E	N 82°18'51" E
C 20	67°22'31"	300.00'	84.51'	42.55°	N 82°18'51" E	N 82°18'51" E



LEGEND
A DROVES UNIMPROVED ROAD CONVEYANCE RIGHT.
B DROVES INTO STATE ROAD, AS APPLICABLE, AND SET.
C DROVES INTO STATE ROAD, MIN. 10' - 1.5' PER REP.
D ALL OTHER LOT CONVEYANCES UNIMPROVED WITH 30' x 20' SETS, REMAINING OVER, MIN. 10' - 1.5' PER REP.
E DROVES CORNER OF THE CONVEYANCE SURVEY.
F DROVES PERMANENT RECORD BOUNDARIES AND DISTANCES.
G DROVES PERMANENT RECORD BOUNDARIES AS NOTED.
H DROVES PUBLIC UTILITY EASEMENT, WIDTH AS SHOWN.
I DROVES INTO STATE ROAD, AS APPLICABLE, AND SET.
J DROVES INTO STATE ROAD, AS APPLICABLE, AND SET.

REMARKS DESCRIPTIONS
1. REFERENCE TO THE PLOTTED RECORD OF THE CONVEYANCE OF THE SOUTHWEST ONE QUARTER OF THE NORTHWEST ONE QUARTER OF SECTION 16, TOWNSHIP 8 NORTH, RANGE 9 EAST, IN THE VILLAGE OF WAUNAKEE, DANE COUNTY WISCONSIN, FILED FOR RECORD IN THE OFFICE OF THE CLERK OF DANE COUNTY, WISCONSIN, ON AUGUST 17, 1935, IS HEREBY MADE.
2. THE PLAT HEREON IS A TRUE AND CORRECT COPY OF THE ORIGINAL SURVEY MADE BY THE SURVEYOR.
3. THE PLAT HEREON IS A TRUE AND CORRECT COPY OF THE ORIGINAL SURVEY MADE BY THE SURVEYOR.
4. THE PLAT HEREON IS A TRUE AND CORRECT COPY OF THE ORIGINAL SURVEY MADE BY THE SURVEYOR.

SECTION 16, T 8 N., R 9 E.
ELEVATION STANDARDS
CONSTRUCTION
NO CHANGE SHALL BE MADE IN THE POSITION OF THE POINTS OF THE SURVEY UNLESS THE SURVEYOR SHALL BE CONVINCED BY THE PROOF OF THE SURVEY THAT THE POINTS ARE IN THE POSITION OF THE SURVEY.

ROBERT A. RICHARDSON, PROFESSIONAL LAND SURVEYOR, S-1883
DANE COUNTY REGISTER OF DEEDS CERTIFICATE
Dated this 17th day of August, 1935.

DAKE COUNTY REGISTER OF DEEDS CERTIFICATE
Dated this 17th day of August, 1935.
JAMES H. WAINMAN, DANE COUNTY REGISTER

DAKE COUNTY REGISTER OF DEEDS CERTIFICATE
Dated this 17th day of August, 1935.
JAMES H. WAINMAN, DANE COUNTY REGISTER

DAKE COUNTY REGISTER OF DEEDS CERTIFICATE
Dated this 17th day of August, 1935.
JAMES H. WAINMAN, DANE COUNTY REGISTER

DAKE COUNTY REGISTER OF DEEDS CERTIFICATE
Dated this 17th day of August, 1935.
JAMES H. WAINMAN, DANE COUNTY REGISTER

DAKE COUNTY REGISTER OF DEEDS CERTIFICATE
Dated this 17th day of August, 1935.
JAMES H. WAINMAN, DANE COUNTY REGISTER

DAKE COUNTY REGISTER OF DEEDS CERTIFICATE
Dated this 17th day of August, 1935.
JAMES H. WAINMAN, DANE COUNTY REGISTER

DAKE COUNTY REGISTER OF DEEDS CERTIFICATE
Dated this 17th day of August, 1935.
JAMES H. WAINMAN, DANE COUNTY REGISTER

DAKE COUNTY REGISTER OF DEEDS CERTIFICATE
Dated this 17th day of August, 1935.
JAMES H. WAINMAN, DANE COUNTY REGISTER

DAKE COUNTY REGISTER OF DEEDS CERTIFICATE
Dated this 17th day of August, 1935.
JAMES H. WAINMAN, DANE COUNTY REGISTER

DAKE COUNTY REGISTER OF DEEDS CERTIFICATE
Dated this 17th day of August, 1935.
JAMES H. WAINMAN, DANE COUNTY REGISTER

DAKE COUNTY REGISTER OF DEEDS CERTIFICATE
Dated this 17th day of August, 1935.
JAMES H. WAINMAN, DANE COUNTY REGISTER

DAKE COUNTY REGISTER OF DEEDS CERTIFICATE
Dated this 17th day of August, 1935.
JAMES H. WAINMAN, DANE COUNTY REGISTER

DAKE COUNTY REGISTER OF DEEDS CERTIFICATE
Dated this 17th day of August, 1935.
JAMES H. WAINMAN, DANE COUNTY REGISTER

DAKE COUNTY REGISTER OF DEEDS CERTIFICATE
Dated this 17th day of August, 1935.
JAMES H. WAINMAN, DANE COUNTY REGISTER

DAKE COUNTY REGISTER OF DEEDS CERTIFICATE
Dated this 17th day of August, 1935.
JAMES H. WAINMAN, DANE COUNTY REGISTER

DAKE COUNTY REGISTER OF DEEDS CERTIFICATE
Dated this 17th day of August, 1935.
JAMES H. WAINMAN, DANE COUNTY REGISTER

DAKE COUNTY REGISTER OF DEEDS CERTIFICATE
Dated this 17th day of August, 1935.
JAMES H. WAINMAN, DANE COUNTY REGISTER

DAKE COUNTY REGISTER OF DEEDS CERTIFICATE
Dated this 17th day of August, 1935.
JAMES H. WAINMAN, DANE COUNTY REGISTER

DAKE COUNTY REGISTER OF DEEDS CERTIFICATE
Dated this 17th day of August, 1935.
JAMES H. WAINMAN, DANE COUNTY REGISTER

DAKE COUNTY REGISTER OF DEEDS CERTIFICATE
Dated this 17th day of August, 1935.
JAMES H. WAINMAN, DANE COUNTY REGISTER

DAKE COUNTY REGISTER OF DEEDS CERTIFICATE
Dated this 17th day of August, 1935.
JAMES H. WAINMAN, DANE COUNTY REGISTER

DAKE COUNTY REGISTER OF DEEDS CERTIFICATE
Dated this 17th day of August, 1935.
JAMES H. WAINMAN, DANE COUNTY REGISTER

DAKE COUNTY REGISTER OF DEEDS CERTIFICATE
Dated this 17th day of August, 1935.
JAMES H. WAINMAN, DANE COUNTY REGISTER

DAKE COUNTY REGISTER OF DEEDS CERTIFICATE
Dated this 17th day of August, 1935.
JAMES H. WAINMAN, DANE COUNTY REGISTER

DAKE COUNTY REGISTER OF DEEDS CERTIFICATE
Dated this 17th day of August, 1935.
JAMES H. WAINMAN, DANE COUNTY REGISTER

DAKE COUNTY REGISTER OF DEEDS CERTIFICATE
Dated this 17th day of August, 1935.
JAMES H. WAINMAN, DANE COUNTY REGISTER

DAKE COUNTY REGISTER OF DEEDS CERTIFICATE
Dated this 17th day of August, 1935.
JAMES H. WAINMAN, DANE COUNTY REGISTER

DAKE COUNTY REGISTER OF DEEDS CERTIFICATE
Dated this 17th day of August, 1935.
JAMES H. WAINMAN, DANE COUNTY REGISTER

DAKE COUNTY REGISTER OF DEEDS CERTIFICATE
Dated this 17th day of August, 1935.
JAMES H. WAINMAN, DANE COUNTY REGISTER

DAKE COUNTY REGISTER OF DEEDS CERTIFICATE
Dated this 17th day of August, 1935.
JAMES H. WAINMAN, DANE COUNTY REGISTER

DAKE COUNTY REGISTER OF DEEDS CERTIFICATE
Dated this 17th day of August, 1935.
JAMES H. WAINMAN, DANE COUNTY REGISTER

DAKE COUNTY REGISTER OF DEEDS CERTIFICATE
Dated this 17th day of August, 1935.
JAMES H. WAINMAN, DANE COUNTY REGISTER

DAKE COUNTY REGISTER OF DEEDS CERTIFICATE
Dated this 17th day of August, 1935.
JAMES H. WAINMAN, DANE COUNTY REGISTER

DAKE COUNTY REGISTER OF DEEDS CERTIFICATE
Dated this 17th day of August, 1935.
JAMES H. WAINMAN, DANE COUNTY REGISTER

DAKE COUNTY REGISTER OF DEEDS CERTIFICATE
Dated this 17th day of August, 1935.
JAMES H. WAINMAN, DANE COUNTY REGISTER

DAKE COUNTY REGISTER OF DEEDS CERTIFICATE
Dated this 17th day of August, 1935.
JAMES H. WAINMAN, DANE COUNTY REGISTER

DAKE COUNTY REGISTER OF DEEDS CERTIFICATE
Dated this 17th day of August, 1935.
JAMES H. WAINMAN, DANE COUNTY REGISTER

DAKE COUNTY REGISTER OF DEEDS CERTIFICATE
Dated this 17th day of August, 1935.
JAMES H. WAINMAN, DANE COUNTY REGISTER

DAKE COUNTY REGISTER OF DEEDS CERTIFICATE
Dated this 17th day of August, 1935.
JAMES H. WAINMAN, DANE COUNTY REGISTER

DAKE COUNTY REGISTER OF DEEDS CERTIFICATE
Dated this 17th day of August, 1935.
JAMES H. WAINMAN, DANE COUNTY REGISTER

DAKE COUNTY REGISTER OF DEEDS CERTIFICATE
Dated this 17th day of August, 1935.
JAMES H. WAINMAN, DANE COUNTY REGISTER

DAKE COUNTY REGISTER OF DEEDS CERTIFICATE
Dated this 17th day of August, 1935.
JAMES H. WAINMAN, DANE COUNTY REGISTER

DAKE COUNTY REGISTER OF DEEDS CERTIFICATE
Dated this 17th day of August, 1935.
JAMES H. WAINMAN, DANE COUNTY REGISTER

DAKE COUNTY REGISTER OF DEEDS CERTIFICATE
Dated this 17th day of August, 1935.
JAMES H. WAINMAN, DANE COUNTY REGISTER

DAKE COUNTY REGISTER OF DEEDS CERTIFICATE
Dated this 17th day of August, 1935.
JAMES H. WAINMAN, DANE COUNTY REGISTER

DAKE COUNTY REGISTER OF DEEDS CERTIFICATE
Dated this 17th day of August, 1935.
JAMES H. WAINMAN, DANE COUNTY REGISTER

DAKE COUNTY REGISTER OF DEEDS CERTIFICATE
Dated this 17th day of August, 1935.
JAMES H. WAINMAN, DANE COUNTY REGISTER

DAKE COUNTY REGISTER OF DEEDS CERTIFICATE
Dated this 17th day of August, 1935.
JAMES H. WAINMAN, DANE COUNTY REGISTER

DAKE COUNTY REGISTER OF DEEDS CERTIFICATE
Dated this 17th day of August, 1935.
JAMES H. WAINMAN, DANE COUNTY REGISTER

DAKE COUNTY REGISTER OF DEEDS CERTIFICATE
Dated this 17th day of August, 1935.
JAMES H. WAINMAN, DANE COUNTY REGISTER

DAKE COUNTY REGISTER OF DEEDS CERTIFICATE
Dated this 17th day of August, 1935.
JAMES H. WAINMAN, DANE COUNTY REGISTER

DAKE COUNTY REGISTER OF DEEDS CERTIFICATE
Dated this 17th day of August, 1935.
JAMES H. WAINMAN, DANE COUNTY REGISTER

DAKE COUNTY REGISTER OF DEEDS CERTIFICATE
Dated this 17th day of August, 1935.
JAMES H. WAINMAN, DANE COUNTY REGISTER

DAKE COUNTY REGISTER OF DEEDS CERTIFICATE
Dated this 17th day of August, 1935.
JAMES H. WAINMAN, DANE COUNTY REGISTER